

## CM-AVIP-IN-1USB-1ETH Dual stream input module

Quick Start Guide V1.40

Firmware version M406 and above

QSG-CM-AVIP-IN-V1.40

Feb 2019

# In this guide

About your Dual stream input module .....	2
Quick start guide .....	3
Checking and updating the CORIOmaster firmware ....	11
Checking your firmware version and downloading new firmware .....	11
Updating the firmware .....	12
Regulatory compliance .....	13
Contact us .....	14

## Get more help



There are more Quick Start Guides available on the USB drive that came with your CORIOmaster. CORIOgrapher now comes with fully searchable help, just select **?** and search, or ask a question.

Thanks for buying this Dual stream input module. The Dual stream input module allows you to decode and play media and images from a USB drive or internal storage, and video streams from IP sources. Sources include streaming server, and from any device when used with an IP encoder, such as the Magenta™ Encoder-100.

## Features

- Play two simultaneous channels of media, including IP streams
- Play video clips from USB drive up to 4K @30 Hz
- Play single IP streams up to 100 Mb/s
- Play dual IP streams up to 40 Mb/s
- Play still images up to 8K
- Play streams with low latency
- Play media from streaming server
- Create and save up to 20 playlists
- Primary channel supports up to 4K @30 Hz
- Secondary channel supports 1080p @60 Hz
- IP streams up to 1080p @60 Hz
- Full resolution and frame rate scaling
- Start playing media when your CORIOmaster™ starts
- Supports USB 2.0 and USB 3.0
- 16 or 128 GB internal storage

This Quick Start Guide assumes that your Dual stream input module is installed in a CORIOmaster™, CORIOmaster mini™, or CORIOmaster micro™.

If you need help installing your Dual stream input module, contact your supplier, consult an experienced AV installer, or contact tvONE support. Contact details are at the back of this guide.

# About your Dual stream input module



**USB (LED)** Indicates the status of the USB drive. Green means that the USB drive is working correctly. Red means that the USB drive is over current.

---

**USB 3.0** Connect a USB drive to play media directly.  
**USB 2.0** For best results, we recommend using quality USB drives compatible with USB 3.0.

---

**ST1 (LED)** Indicates the status of the card. Green means that the card is working correctly. Red means that the card is starting, or that there is a problem.

---

**ST2 (LED)** Indicates the status of the module. Green means that the module is working correctly. Red means that the module is starting, or that there is a problem.

---

**LAN** Connect an Ethernet cable to play media over IP.

If any status indicator stays red, restart your CORIOmaster. If that doesn't work, contact tvONE support. Contact details are at the back of this guide.

## Supported formats

The Dual stream input module supports the following formats:

Multimedia container formats	.mp4, .mov, .mkv, .m4v, .ts, .mts, .m2ts, .mt2	Embedded audio formats	.mp3, .aac
------------------------------	--	------------------------	------------

## Quick start guide



It's easy to get started with the Dual stream input module, but if you want more help with any of these steps, or with setting up and using streaming media, select **?** in CORIOgrapher™ and search, or ask a question.

### Setting up the Dual stream input module

1. Connect your cables and power on your CORIOmaster™, CORIOmaster mini™, or CORIOmaster micro™.



To stream media, connect an Ethernet cable to the Dual stream input module, or connect a USB drive to play media directly.

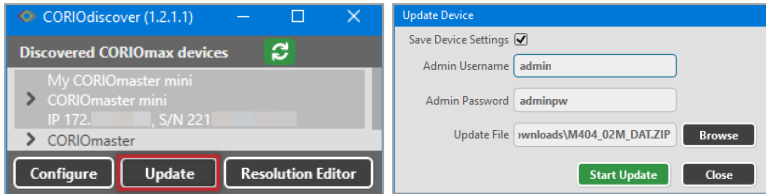


For 4K media, use a good quality, high-speed 3.0 USB drive.



Make sure your CORIOmaster is connected to your display devices and to an AC power outlet.

2. Download the latest firmware for your CORIOmaster from [tvone.com/firmware-updates](http://tvone.com/firmware-updates).
3. Use CORIOdiscover to update your firmware.




Read more about updating firmware on page 11.

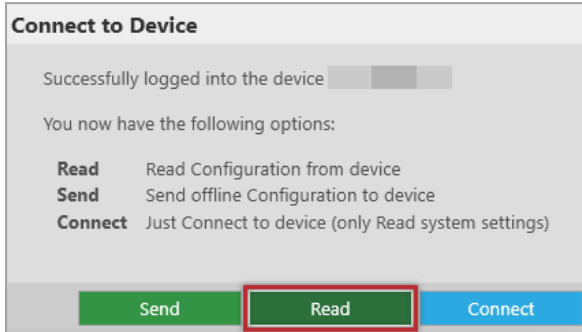
4. Download the latest version of CORIOgrapher from [tvone.com/software](http://tvone.com/software).
5. Install the latest software.



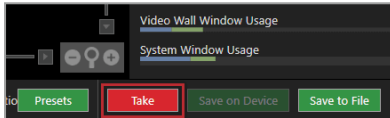
The latest version of CORIOgrapher includes help files. If you need help with any of the following steps, select **?** in CORIOgrapher and search, or ask a question.

## Connecting to CORIOgrapher™ and choosing network settings

1. Open CORIOgrapher , connect to your CORIOmaster, and read the configuration from your device.




Make sure you have a video wall set up that includes at least one window that uses a source from the Dual stream input module, and select Take.



2. **OPTIONAL:** if you only want to play media from a USB drive, you don't need to do this step.

If you want to stream media over IP, choose network settings for your Dual stream input module.

Select  > Module Configuration.

Find the Dual stream module that you want to set up, and select  > Configure.



**Networking**

Configuration:  ▾

IP Address:  .  .  .

Subnet Mask:  .  .  .

Default Gateway:  .  .  .

DNS (Preferred):  .  .  .

DNS (Alternative):  .  .  .

MAC Address:

Link Speed:

If you choose DHCP, the network assigns you an IP address.

If you choose a static IP address:

- Enter a value for your IP address and subnet mask.
- If you want to stream from the internet, enter a value for your gateway.
- If you want to refer to a source by name, enter a value for DNS.

**Static IP address**



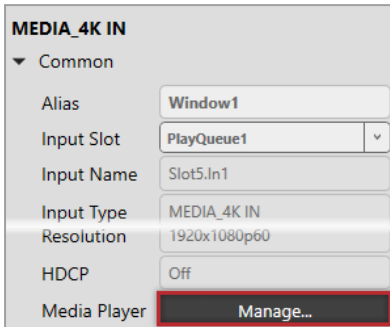
If you choose a static IP address, make sure you enter a unique value for your IP address. Using the same IP address for multiple devices can cause your devices to disconnect.

If you need help with network settings, contact your network administrator.

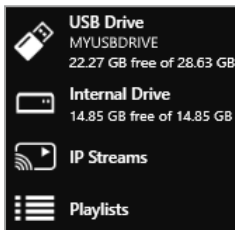


## Playing media and streams

1. Double-click the window you wish to play streaming media, and select (Media Player) Manage.



2. Select your media source.



Your media items appear as icons.



Still image



Saved stream



Video clip



Found encoder

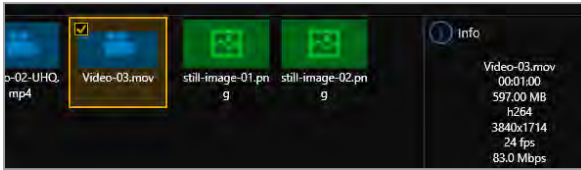


Playlist

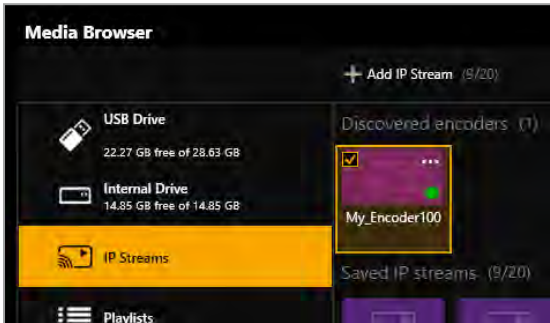


Found encoder,  
streaming

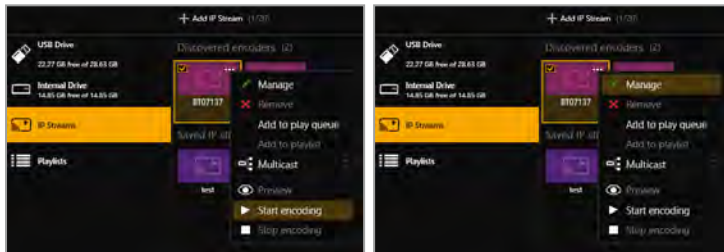
Information about the media item appears on the right.



- OPTIONAL:** if you want to stream media, add your streams.
  - If you want to stream from an Encoder-100, check that it is encoding. Look for the green spot.



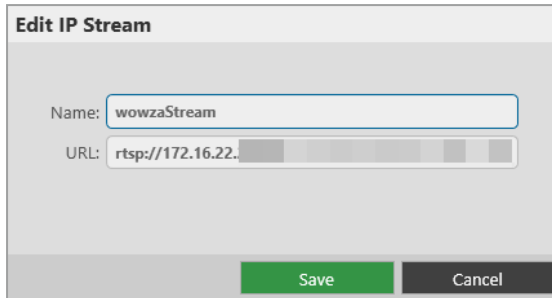
If the encoder is not encoding, you might need to start or configure it.



Read about starting and configuring the Encoder-100 in CORIOgrapher Help

- If you want to stream from the internet, or from an encoder that does not appear in *Discovered encoders*, add the

stream. Select IP Streams > Add IP Stream and enter a useful name and the URL of the media stream.

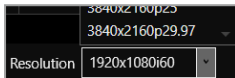


**Edit IP Stream**

Name:

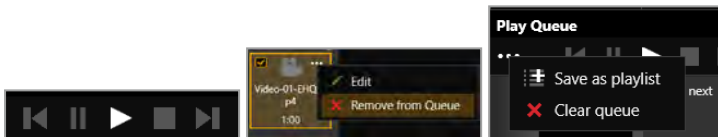
URL:

4. Choose a resolution for your media stream.



Tips and recommendations for choosing the best resolution are available in CORIOgrapher Help.

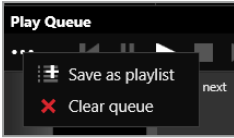
5. Drag media items and streams into the play queue and use the playback controls to play your media. Check that the media is playing on your video wall.
6. Use the playback controls start, stop, pause, skip to the next item, and return to the previous item. You can select and delete media items, or clear the entire play queue.



To loop the play queue, first stop playback.



7. **OPTIONAL:** you can save your play queue as a playlist.



You can also create playlists in the playlist editor.  
For more information, see CORIOgrapher Help.

## Setting up the internal drive

You can save media items from your USB drive to the internal drive.

When you first set up your internal drive, it is useful to copy the entire contents of your USB drive to the internal drive. All your media items and folders are copied exactly to the internal drive, for pathways up to 480 characters, or fewer, depending on the language you use.



Unsupported items are also copied to the internal drive. You can't see these items but they still take up space. Check that your USB drive contains only supported items before you start.  
See a list of supported items on page 2.

- Select (USB Drive) ⋮ > Replace all items on the internal drive.



For more information about managing your internal drive, see CORIOgrapher Help.

# Checking and updating the CORIOmaster firmware

You must be connected to your CORIOmaster™ to check and update firmware.

Find your firmware version on CORIOgrapher™ > Home. Update your firmware on CORIODiscover > Update Device.



When you update the firmware, any unsaved configuration in CORIOgrapher is deleted. Make sure you save any configurations that you want to keep before you start the updating process. You can also save a backup file on your PC.

Read about saving a backup file on page 1.

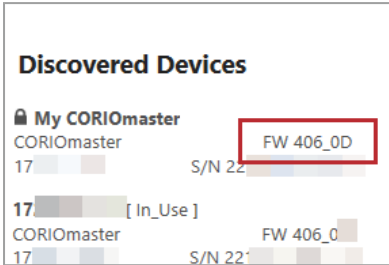
## Before you start

To install the latest CORIOmaster firmware, you need CORIODiscover V1.6 or above. V1.6 of CORIODiscover is available from the CORIOmaster C3-540 page at [tvone.com/firmware-updates](http://tvone.com/firmware-updates).

## Checking your firmware version and downloading new firmware

CORIODiscover warns you if you try to install firmware that is older or the same as your existing firmware. If you don't want to check your existing firmware version, skip to step **2**.

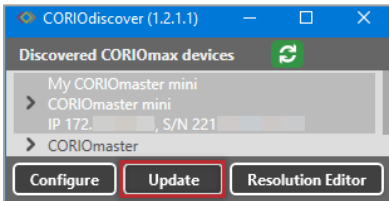
1. In CORIOgrapher > Home, find your current firmware version next to the name of your CORIOmaster.



2. Check for newer firmware at [tvone.com/firmware-updates](http://tvone.com/firmware-updates).  
Select your device from the list and compare the firmware version to your own.
  - If you have a CORIOmaster, select CORIOmaster C3-540.
  - If you have a CORIOmaster mini™, select CORIOmaster mini C3-510.
  - If you have a CORIOmaster micro™, select CORIOmaster micro C3-503.
3. If your firmware is out of date, download the zipped DAT file.  
You don't need to extract the DAT file.

## Updating the firmware

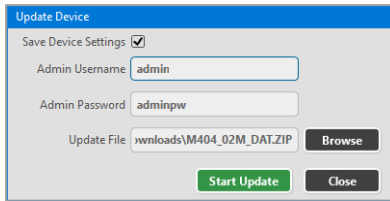
1. In CORIODiscover, select .



2. Select your CORIOmaster from the list and select Update.
3. To save your CORIOmaster settings, select Save Device Settings.

When you save your settings, your CORIOmaster keeps all your saved configurations and video walls.

4. Enter your administrator login details.



The screenshot shows a dialog box titled "Update Device". It has a blue header bar. Below the header, there is a "Save Device Settings" checkbox which is checked. There are three input fields: "Admin Username" with the text "admin", "Admin Password" with the text "adminpw", and "Update File" with the text "downloads\M404\_02M\_DAT.ZIP". To the right of the "Update File" field is a "Browse" button. At the bottom of the dialog, there are two buttons: a green "Start Update" button and a grey "Close" button.

5. Browse to the zipped DAT file that you downloaded.
6. Select Start Update.

When the update is finished, you can log in to your CORIOmaster again.

## Regulatory compliance

This product has been tested for compliance with appropriate FCC and CE rules and regulations. The power adapter and supply has been tested for compliance with appropriate UL, CUL, CE, PSE, GS, rules, regulations and/or guidelines. This product and its power adapter is RoHS compliant.

# Contact us

🌐 [tvone.com](https://tvone.com)

✉ [info@tvone.com](mailto:info@tvone.com)

✉ **Support NCSA:** [tech.usa@tvone.com](mailto:tech.usa@tvone.com)

✉ **Support EMEA:** [tech.europe@tvone.com](mailto:tech.europe@tvone.com)

✉ **Support Asia:** [tech.asia@tvone.com](mailto:tech.asia@tvone.com)

Information in this document is subject to change without notice. No part of this publication may be reproduced, stored in a retrieval system, or transmitted in any form or any means electronic or mechanical, including photocopying and recording for any purpose other than the purchaser's personal use without the written permission of tvONE.

Copyright © 2019 tvONE™tvONE®. All rights reserved.

Registered in the U.S. Patent and Trademark Office.